



# WEWOOD

PORTUGUESE JOINERY



**RETAIL RECOMMENDED PRICE LIST 2026**

ENGLISH / EURO, EXCL. VAT

V.02.0. 2026



# INDEX

## **ACCESSORIES** pp. 4 - 5

**CANCAN** p. 5

**LUNA** p. 5

**SIXTY'S** p. 5

## **BEDS** pp. 6 - 7

**NORAY** p. 7

**PLATFORM** p. 7

## **BOOKSHELVES** pp. 8 - 11

**X2** p. 9

**PATH** p. 9 - 11

## **DESKS & CONSOLES** p. 12 - 13

**METIS** p. 13

**BRIDGE** p. 13

**RE-FORM** p. 13

## **SEATING** pp. 14 - 22

**OPERA** p. 15

**NOOK** p. 15

**VIO** p. 15

**CARAVELA** p. 16

**NIDO** p. 16

**DEGAS** p. 17

**BOTERO** p. 17

**PALA** p. 17

**ORCA** p. 17

**KUNDERA** p. 17

**KOBE** p. 18

**LOOP** p. 18

**MULTIBANQUETA** p. 18

**SCAFFOLD** p. 20

**BOWIE** p. 20

**DOME** p. 21 - 22

## **TABLES** pp. 23 - 26

**RAIA** p. 24

**SOMA** p. 24

**AMOS** p. 24

**ANCHOR** p. 24

**VASCO** p. 24

**NURIA** p. 24

**KAYA** p. 25

**ANCHOR** p. 25

**HEXA** p. 25

**MEMÓRIA** p. 25

**CORNER** p. 25

**AMOS** p. 26

**RE-FORM** p. 26

**DUPLEX** p. 26

**TRIPLEX** p. 26

**CRiado-MUDO** p. 26

## **STORAGE** pp. 27 - 29

**BRUTALIST** p. 28

**SCARPA** p. 28

**CAROUSEL** p. 28

**RADIO** p. 28

**MISTER** p. 28

**TOUCH** p. 28

**CONTADOR II** p. 29

**CONTADOR SPECIAL** p. 29

**DOUBLE** p. 29

## **MATERIALS & COLORS** pp. 31 - 52

## **TERMS & CONDITIONS** pp. 54 - 61

# ACCESSORIES



## ACCESSORIES


**CANCAN COAT STAND** ●●

MADE OF FOUR PIECES IN SOLID WOOD TIED WITH LEATHER ROPE. THE CUT ON THE EDGE OF EACH POLE ALLOWS TO SAFELY HANG COATS.

DESIGNER STUDIO GUD

## REFERENCES

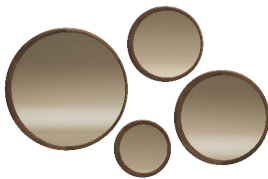
**WCBGU001C** OAK  
**WCBGU001N** WALNUT

## DIMENSIONS

W 465 H 1700 D 450MM

## PRICE

1300€  
1654€


**LUNA MIRRORS** ●●

FOUR DIFFERENT SIZED MIRRORS. WOODEN FRAME IN OAK OR WALNUT AND A BRONZE OR NORMAL MIRROR.

DESIGNER ELEONORA FEDI

## REFERENCES

**WEDEF003C** Ø 450 OAK  
**WEDEF003N** Ø 450 WALNUT  
**WEDEF002C** Ø 600 OAK  
**WEDEF002N** Ø 600 WALNUT  
**WEDEF004C** Ø 900 OAK  
**WEDEF004N** Ø 900 WALNUT  
**WEDEF001C** Ø 1200 OAK  
**WEDEF001N** Ø 1200 WALNUT

## PRICE

749€  
1019€  
962€  
1253€  
1191€  
1664€  
1435€  
1841€


**SIXTY'S MIRRORS** ●●

THREE DIFFERENT SIZED MIRRORS WITH WOOD FRAME AND A BRONZE OR NORMAL MIRROR. IT'S THE PERFECT PIECE FOR ANY ROOM, VERTICAL OR HORIZONTALLY.

DESIGNER WEWOOD DESIGN CENTER

## REFERENCES

**WEDWW001C** 700 OAK  
**WEDWW001N** 700 WALNUT  
**WEDWW002C** 1150 OAK  
**WEDWW002N** 1150 WALNUT  
**WEDWW003C** 1800 OAK  
**WEDWW003N** 1800 WALNUT

## PRICE

1310€  
1685€  
1633€  
1820€  
1893€  
2288€

## DIMENSIONS

W 700 H 700 D 50MM  
W 655 H 1150 D 50MM  
W 700 H 1800 D 50MM

# B E D S



## BEDS


**NORAY BED**


A CONTEMPORARY SCULPTURAL BED, COMPOSED OF SOFT, ROUNDED VOLUMES THAT RADIATE COMFORT AND COZINESS.

**MATRESS NOT INCLUDED.**

DESIGNER ERNO DIERCKX

FABRIC CONSUMPTION: **1600** 4,50 M | **1800** 5,00 M | **2000** 5,50 M

LEATHER CONSUMPTION: **1600** 10,00 M<sup>2</sup> | **1800** 10,00 M<sup>2</sup> | **2000** 10,00 M<sup>2</sup>

**CONSIDERING 1,40M WIDE FABRIC ROLL**

## REFERENCES

**WCMDX001C** OAK 1600 COM  
**WCMDX001N** WALNUT 1600 COM  
**WCMDX002C** OAK 1800 COM  
**WCMDX002N** WALNUT 1800 COM  
**WCMDX003C** OAK 2000 COM  
**WCMDX003N** WALNUT 2000 COM

## PRICE

5178€  
 5850€  
 5325€  
 6035€  
 5490€  
 6380€

## DIMENSIONS

W 2070 H 970 D 2305MM  
 W 2270 H 970 D 2305MM  
 W 2470 H 970 D 2305MM

1600	A	B	C	L
OAK	5588€	5939€	6555€	7378€
WALNUT	6260€	6611€	7227€	8050€
1800	A	B	C	L
OAK	5780€	6170€	6855€	7525€
WALNUT	6490€	6880€	7525€	8235€
2000	A	B	C	L
OAK	5991€	6420€	7173€	7690€
WALNUT	6881€	7310€	8063€	8580€


**PLATFORM BED**


BED AVAILABLE IN THREE SIZES. CAN BE PERSONALIZED WITH A SELECTION OF FINE WOODS AND TEXTILE OPTIONS.

**MATRESS NOT INCLUDED.**

DESIGNER CHRISTIAN HAAS

FABRIC CONSUMPTION: **1600** 2,6 M | **1800** 2,8 M | **2000** 2,9 M

LEATHER CONSUMPTION: **1600** 4,37 M<sup>2</sup> | **1800** 4,7 M<sup>2</sup> | **2000** 4,9 M<sup>2</sup>

**CONSIDERING 1,40M WIDE FABRIC ROLL**

## REFERENCES

**WCMCH001C** OAK 1600 COM  
**WCMCH001N** WALNUT 1600 COM  
**WCMCH002C** OAK 1800 COM  
**WCMCH002N** WALNUT 1800 COM  
**WCMCH003C** OAK 2000 COM  
**WCMCH003N** WALNUT 2000 COM

## PRICE

5830€  
 6160€  
 6501€  
 6831€  
 7337€  
 7667€

## DIMENSIONS

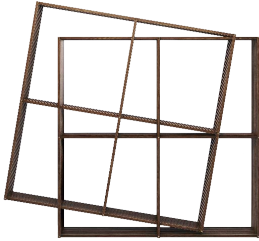
W 2010 H 890 D 2535MM  
 W 2210 H 890 D 2535MM  
 W 2410 H 890 D 2535MM

1600	A	B	C	L
OAK	6067€	6269€	6626€	6791€
WALNUT	6397€	6599€	6956€	7121€
1800	A	B	C	L
OAK	6756€	6974€	7358€	7535€
WALNUT	7086€	7304€	7688€	7865€
2000	A	B	C	L
OAK	7610€	7844€	8255€	8415€
WALNUT	7940€	8174€	8585€	8745€

# BOOKSHELVES



## BOOKSHELVES


**X2 BOOKSHELF** ●●

BOOKSHELF IN SOLID WOOD, FULLY CUSTOMIZABLE. ALLOWS TO INCREASE THE WIDTH AND HEIGHT ANYTIME AND CREATING SO NEW COMPARTMENTS TO STORAGE ANY ITEMS.

DESIGNER LAURINDO MARTA

## REFERENCES

**WETLM001C** OAK  
**WETLM001N** WALNUT

DIMENSIONS  
W 1500 H 1500 D 300MM

## PRICE

2802€  
3760€


**PATH SHELVING SYSTEM** ●●

MODULAR WOODEN SHELVING SYSTEM DESIGNED FOR VERSATILITY, COMBINING SHELVES AND STORAGE BOXES TO MAXIMIZE SPACE WHILE MAINTAINING AN OPEN, ARCHITECTURAL AESTHETIC.

DESIGNER DAN YEFFET

## REFERENCES

**SHELVES**

**WETDY001C** SMALL SHELF OAK  
**WETDY001N** SMALL SHELF WALNUT  
**WETDY002C** LARGE SHELF OAK  
**WETDY002N** LARGE SHELF WALNUT

**CABINETS**

**WETDY003C** SMALL CABINET OAK  
**WETDY003N** SMALL CABINET WALNUT  
**WETDY004C** SMALL CABINET SLATED OAK  
**WETDY004N** SMALL CABINET SLATED WALNUT  
**WETDY005C** MEDIUM CABINET OAK  
**WETDY005N** MEDIUM CABINET WALNUT  
**WETDY006C** MEDIUM CABINET SLATED OAK  
**WETDY006N** MEDIUM CABINET SLATED WALNUT  
**WETDY007C** LARGE CABINET OAK  
**WETDY007N** LARGE CABINET WALNUT  
**WETDY008C** LARGE CABINET SLATED OAK  
**WETDY008N** LARGE CABINET SLATED WALNUT

**MODULES**

**WETDY009C** SMALL MODULE OAK (WITHOUT SLITS)  
**WETDY009N** SMALL MODULE WALNUT (WITHOUT SLITS)  
**WETDY010C** SMALL MODULE OAK (ONE SIDE SLITS)  
**WETDY010N** SMALL MODULE WALNUT (ONE SIDE SLITS)  
**WETDY011C** SMALL MODULE OAK (TWO SIDE SLITS)  
**WETDY011N** SMALL MODULE WALNUT (TWO SIDE SLITS)  
**WETDY012C** TALL MODULE OAK (WITHOUT SLITS)  
**WETDY012N** TALL MODULE WALNUT (WITHOUT SLITS)  
**WETDY013C** TALL MODULE OAK (ONE SIDE SLITS)  
**WETDY013N** TALL MODULE WALNUT (ONE SIDE SLITS)  
**WETDY014C** TALL MODULE OAK (TWO SIDE SLITS)  
**WETDY014N** TALL MODULE WALNUT (TWO SIDE SLITS)  
**WETDY015C** TALL MODULE OAK (ONE SIDE UPPER SLITS)  
**WETDY015N** TALL MODULE WALNUT (ONE SIDE UPPER SLITS)  
**WETDY016C** TALL MODULE OAK (TWO SIDE UPPER SLITS)  
**WETDY016N** TALL MODULE WALNUT (TWO SIDE UPPER SLITS)  
**WETDY017T** TOP COVER TRAVERTINE

## PRICE

203€  
213€  
225€  
291€  
406€  
458€  
515€  
562€  
671€  
738€  
858€  
957€  
889€  
988€  
1076€  
1201€  
616€  
709€  
661€  
756€  
693€  
789€  
712€  
853€  
790€  
931€  
867€  
1008€  
749€  
899€  
790€  
931€  
56€

 DIMENSIONS  
**SHELVES**

**SMALL SHELF** W 1020 H 20 D 416MM  
**LARGE SHELF** W 1360 H 20 D 416MM

**CABINETS**

**SMALL CABINET** W 500 H 348 D 325MM  
**MEDIUM CABINET** W 860 H 348 D 325MM  
**LARGE CABINET** W 1200 H 348 D 325MM

**MODULE**

**SMALL MODULE** W 230 H 262 D 420MM  
**TALL MODULE** W 230 H 520 D 420MM  
**TOP COVER** W 210 H 20 D 400MM

## BOOKSHELVES



### SET 1 ●●

#### INCLUDES

4\*SMALL SHELF  
2\*LARGE SHELF  
2\*MEDIUM CABINET  
1\*LARGE CABINET SLATED  
2\*TALL MODULE (ONE SIDE SLITS)  
2\*TALL MODULE (TWO SIDE SLITS)  
4\*TOP COVER TRAVERTINE

#### DIMENSIONS

TOTAL: W 3900 H 520 D 420MM

OAK: 7168€

WALNUT: 8215€



### SET 3 ●●

#### INCLUDES

5\*SMALL SHELF  
2\*LARGE SHELF  
2\*MEDIUM CABINET  
1\*LARGE CABINET SLATED  
2\*SMALL MODULE (ONE SIDE SLITS)  
2\*TALL MODULE (ONE SIDE SLITS)  
2\*TALL MODULE (TWO SIDE SLITS)  
4\*TOP COVER TRAVERTINE

#### DIMENSIONS

TOTAL: W 3900 H 762 D 420MM

OAK: 8520€

WALNUT: 9940€



### SET 5 ●●

#### INCLUDES

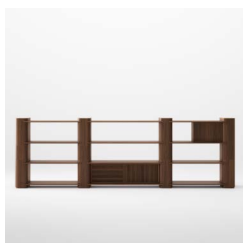
6\*SMALL SHELF  
2\*LARGE SHELF  
1\*LARGE CABINET SLATED  
4\*SMALL MODULE (ONE SIDE SLITS)  
2\*TALL MODULE (ONE SIDE SLITS)  
2\*TALL MODULE (TWO SIDE SLITS)  
4\*TOP COVER TRAVERTINE

#### DIMENSIONS

TOTAL: W 3900 H 762 D 420MM

OAK: 8928€

WALNUT: 10189€



### SET 7 ●●

#### INCLUDES

8\*SMALL SHELF  
4\*LARGE SHELF  
1\*SMALL CABINET  
1\*LARGE CABINET SLATED  
4\*SMALL MODULE (WITHOUT SLITS)  
4\*TALL MODULE (ONE SIDE SLITS)  
4\*TALL MODULE (TWO SIDE SLITS)  
4\*TOP COVER TRAVERTINE

#### DIMENSIONS

TOTAL: W 3900 H 1262 D 420MM

OAK: 13321€

WALNUT: 15408€



### SET 2 ●●

#### INCLUDES

5\*SMALL SHELF  
2\*LARGE SHELF  
2\*MEDIUM CABINET  
1\*LARGE CABINET SLATED  
2\*SMALL MODULE (ONE SIDE SLITS)  
2\*TALL MODULE (ONE SIDE SLITS)  
2\*TALL MODULE (TWO SIDE SLITS)  
4\*TOP COVER TRAVERTINE

#### DIMENSIONS

TOTAL: W 3900 H 762 D 420MM

OAK: 8520€

WALNUT: 9940€



### SET 4 ●●

#### INCLUDES

5\*SMALL SHELF  
2\*LARGE SHELF  
1\*LARGE CABINET SLATED  
2\*SMALL MODULE (ONE SIDE SLITS)  
2\*TALL MODULE (ONE SIDE SLITS)  
2\*TALL MODULE (TWO SIDE SLITS)  
4\*TOP COVER TRAVERTINE

#### DIMENSIONS

TOTAL: W 3900 H 762 D 420MM

OAK: 7403€

WALNUT: 8463€



### SET 6 ●●

#### INCLUDES

8\*SMALL SHELF  
4\*LARGE SHELF  
2\*SMALL CABINET  
2\*MEDIUM CABINET  
1\*LARGE CABINET SLATED  
4\*SMALL MODULE (WITHOUT SLITS)  
4\*TALL MODULE (ONE SIDE SLITS)  
4\*TALL MODULE (TWO SIDE SLITS)  
4\*TOP COVER TRAVERTINE

#### DIMENSIONS

TOTAL: W 3900 H 1262 D 420MM

OAK: 15069€

WALNUT: 17342€



### SET 8 ●●

#### INCLUDES

10\*SMALL SHELF  
4\*LARGE SHELF  
2\*SMALL CABINET  
2\*MEDIUM CABINET  
1\*LARGE CABINET SLATED  
6\*SMALL MODULE (WITHOUT SLITS)  
6\*TALL MODULE (ONE SIDE SLITS)  
4\*TALL MODULE (TWO SIDE SLITS)  
4\*TOP COVER TRAVERTINE

#### DIMENSIONS

TOTAL: W 3900 H 2004 D 420MM

OAK: 14948€

WALNUT: 17845€

## BOOKSHELVES


**SET 9** ●●

INCLUDES  
 10\*SMALL SHELF  
 4\*LARGE SHELF  
 2\*SMALL CABINET  
 2\*MEDIUM CABINET  
 1\*LARGE CABINET SLATED  
 6\*SMALL MODULE (WITHOUT SLITS)  
 6\*TALL MODULE (ONE SIDE SLITS)  
 4\*TALL MODULE (TWO SIDE SLITS)  
 4\*TOP COVER TRAVERTINE

DIMENSIONS  
 TOTAL: W 3900 H 2004 D 420MM

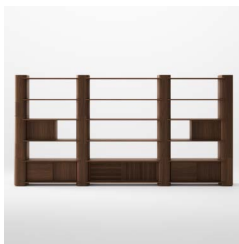
OAK: 14948€  
 WALNUT: 17845€


**SET 10** ●●

INCLUDES  
 12\*SMALL SHELF  
 4\*LARGE SHELF  
 2\*SMALL CABINET  
 2\*MEDIUM CABINET  
 1\*LARGE CABINET SLATED  
 8\*SMALL MODULE (WITHOUT SLITS)  
 8\*TALL MODULE (ONE SIDE SLITS)  
 4\*TALL MODULE (TWO SIDE SLITS)  
 4\*TOP COVER TRAVERTINE

DIMENSIONS  
 TOTAL: W 3900 H 2004 D 420MM

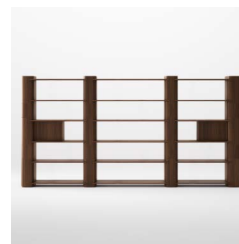
OAK: 18166€  
 WALNUT: 21552€


**SET 11** ●●

INCLUDES  
 12\*SMALL SHELF  
 6\*LARGE SHELF  
 2\*SMALL CABINET  
 2\*MEDIUM CABINET  
 1\*LARGE CABINET SLATED  
 8\*SMALL MODULE (WITHOUT SLITS)  
 6\*TALL MODULE (ONE SIDE SLITS)  
 6\*TALL MODULE (TWO SIDE SLITS)  
 4\*TOP COVER TRAVERTINE

DIMENSIONS  
 TOTAL: W 3900 H 2004 D 420MM

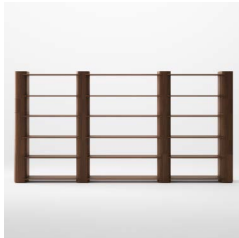
OAK: 22107€  
 WALNUT: 25429€


**SET 12** ●●

INCLUDES  
 12\*SMALL SHELF  
 6\*LARGE SHELF  
 2\*SMALL CABINET  
 8\*SMALL MODULE (WITHOUT SLITS)  
 6\*TALL MODULE (ONE SIDE SLITS)  
 6\*TALL MODULE (TWO SIDE SLITS)  
 4\*TOP COVER TRAVERTINE

DIMENSIONS  
 TOTAL: W 3900 H 2004 D 420MM

OAK: 19689€  
 WALNUT: 22751€


**SET 13** ●●

INCLUDES  
 12\*SMALL SHELF  
 6\*LARGE SHELF  
 8\*SMALL MODULE (WITHOUT SLITS)  
 6\*TALL MODULE (ONE SIDE SLITS)  
 6\*TALL MODULE (TWO SIDE SLITS)  
 4\*TOP COVER TRAVERTINE

DIMENSIONS  
 TOTAL: W 3900 H 2004 D 420MM

OAK: 18878€  
 WALNUT: 21836€

# DESKS & CONSOLES



## DESKS AND CONSOLES


**METIS** DESK ●●

COMPACT DESK MADE OF SOLID WOOD, OFFERING A REAL STORAGE SOLUTION WITH THREE DRAWERS, ONE SECRET COMPARTMENT AND TWO LIDDED SECTIONS.

DESIGNER GONALO CAMPOS

## REFERENCES

**WSCGC001C** OAK  
**WSCGC001N** WALNUT

DIMENSIONS  
W 1400 H 750 D 755MM

## PRICE

5655€  
7426€


**BRIDGE** DESK ●●

ROUNDED SURFACES AND AN OVERALL MINIMALIST AESTHETIC DESK MADE FROM OAK OR WALNUT WITH METAL ARCS THAT SPAN THE LEGS.

DESIGNER CHRISTOPHE DE SOUSA

## REFERENCES

**WSCCS001C** OAK  
**WSCCS001N** WALNUT

DIMENSIONS  
W 1200 H 740 D 710MM

## PRICE

3860€  
5320€


**RE-FORM** CONSOLE ●●

CONSOLE AVAILABLE IN TWO MODULES OF DIFFERENT SIZES. IT SKILLFULLY MELTS DISTINCT ELEMENTS TO CRAFT COHESIVE WHOLE AND UNEXPECTED, EVOLVING COMBINATIONS.

DESIGNER ALAIN GILLES

## REFERENCE

**WSCAG001C** OAK SMALL  
**WSCAG001N** WALNUT SMALL  
**WSCAG002C** OAK LARGE  
**WSCAG002N** WALNUT LARGE

DIMENSIONS  
W 500 H 800 D 400MM  
W 800 H 800 D 400MM

## PRICE

1185€  
1432€  
1494€  
1679€

# SEATING



**PLEASE NOTE:**

DUE TO THE WIDE RANGE OF STATE-OF-THE-ART FABRICS AND LEATHER THAT WE NOW HAVE IN OUR COLLECTION, WE HAVE DIVIDED IT IN FOUR GROUPS (A, B, C, FOR FABRICS AND L FOR LEATHER). THE FABRICS AND LEATHER MUST BE CHOSEN ON PAGES 34 - 51. THERE IS ALWAYS THE POSSIBILITY OF COM.


**OPERA CHAISE LONGUE** ●

OPERA IS A CLASSIC, TIMELESS, SOPHISTICATED PIECE THAT INVITES TO RELAX. AVAILABLE IN WALNUT AND BLACK LEATHER.

DESIGNER FABRICIO RONCA

LEATHER CONSUMPTION: 10,00 M<sup>2</sup>

## REFERENCES

**WCDSR004N** WALNUT / LEATHER

## PRICE

4620€

## DIMENSIONS

W 625 H 870 D 1890MM


**NOOK CHAIR** ●●

NOOK IS A ROBUST, DURABLE AND COMFORTABLE CHAIR WITH A WOODEN BASE AND A NATURAL LEATHER SEAT AVAILABLE IN THREE COLOURS.

DESIGNER RAFAEL OLIVA

LEATHER CONSUMPTION: 2,00 M<sup>2</sup>

## REFERENCES

**WCDRO001C** OAK / LEATHER

**WCDRO001N** WALNUT / LEATHER

## PRICE

1454€

1830€

## DIMENSIONS

W 530 H 880 D 520MM


**NOOK LOUNGE CHAIR** ●●

NOOK LOUNGE CHAIR IS THE LOUNGE VERSION OF NOOK CHAIR. ROBUST, DURABLE AND COMFORTABLE CHAIR WITH A WOODEN BASE AND A NATURAL LEATHER SEAT AVAILABLE IN THREE COLOURS.

DESIGNER RAFAEL OLIVA

LEATHER CONSUMPTION: 2,00 M<sup>2</sup>

## REFERENCES

**WCDRO002C** OAK / LEATHER

**WCDRO002N** WALNUT / LEATHER

## PRICE

1540€

1925€

## DIMENSIONS

W 590 H 970 D 625MM


**VIO CHAIR** ●●

VIO IS A VERSATILE WOODEN CHAIR, AVAILABLE IN UPHOLSTERED OR NON-UPHOLSTERED VERSIONS.

DESIGNER CHRISTIAN HAAS

FABRIC CONSUMPTION: 1,00 M

LEATHER CONSUMPTION: 1,00 M<sup>2</sup>

## REFERENCES

**WCDCH003C** OAK

**WCDCH003N** WALNUT

**WCDCH004C** OAK COM

**WCDCH004N** WALNUT COM

## PRICE

475€

784€

535€

844€

## DIMENSIONS

W 480 H 815 D 520MM

	A	B	C	L
OAK	626€	704€	841€	755€
WALNUT	935€	1013€	1150€	1064€


**VIO ARMCHAIR** ●●

VIO IS A VERSATILE WOODEN ARMCHAIR, AVAILABLE IN UPHOLSTERED OR NON-UPHOLSTERED VERSIONS.

DESIGNER CHRISTIAN HAAS

FABRIC CONSUMPTION: 1,00 M

LEATHER CONSUMPTION: 1,00 M<sup>2</sup>

## REFERENCES

**WCDCH005C** OAK

**WCDCH005N** WALNUT

**WCDCH006C** OAK COM

**WCDCH006N** WALNUT COM

## PRICE

620€

896€

680€

956€

## DIMENSIONS

W 560 H 815 D 520MM

	A	B	C	L
OAK	771€	849€	986€	900€
WALNUT	1047€	1125€	1262€	1176€

## CHAIRS



### CARAVELA CHAIR ●●

ROBUST AND ELEGANT CHAIR FULLY UPHOLSTERED WITH GREAT COMFORT.

DESIGNER GONÇALO CAMPOS

FABRIC CONSUMPTION: 1 M  
 LEATHER CONSUMPTION: 1,68 M<sup>2</sup>

#### REFERENCES

**WCDGC001C** OAK COM  
**WCDGC001N** WALNUT COM

#### PRICE

625€  
 760€

#### DIMENSIONS

W 540 H 800 D 610MM

	A	B	C	L
OAK	716€	794€	931€	995€
WALNUT	851€	929€	1066€	1130€



### CARAVELA BAR STOOL ●●

FULLY UPHOLSTERED STOOL WITH GREAT COMFORT. PART OF A FAMILY OF CHAIRS.

DESIGNER GONÇALO CAMPOS

FABRIC CONSUMPTION: 1 M  
 LEATHER CONSUMPTION: 1,68 M<sup>2</sup>

#### REFERENCES

**WCDGC002C** OAK COM  
**WCDGC002N** WALNUT COM  
**WCDGC007C** OAK COM  
**WCDGC007N** WALNUT COM

#### PRICE

699€  
 895€  
 699€  
 895€

#### DIMENSIONS

W 465 H 990 D 565MM  
 W 450 H 880 D 510MM

	A	B	C	L
OAK	790€	868€	1005€	1069€
WALNUT	986€	1064€	1201€	1265€



### CARAVELA LOUNGE CHAIR ●●

COMFORTABLE LOUNGE CHAIR WITH LEGS IN SOLID WOOD. THE FABRIC CAN BE CUSTOMIZED

DESIGNER GONÇALO CAMPOS

FABRIC CONSUMPTION: 2 M  
 LEATHER CONSUMPTION: 3,36 M<sup>2</sup>

#### REFERENCES

**WCDGC003C** OAK COM  
**WCDGC003N** WALNUT COM

#### PRICE

820€  
 920€

#### DIMENSIONS

W 580 H 760 D 675MM

	A	B	C	L
OAK	1002€	1158€	1432€	1559€
WALNUT	1102€	1258€	1532€	1659€



### NIDO ARMCHAIR ●●

COMPACT ARMCHAIR WITH STRONG SCULPTURAL PRESENCE. SOFT CURVES AND LEGS IN SOLID WOOD.

DESIGNER CHRISTIAN HAAS

FABRIC CONSUMPTION: 2,5 M  
 LEATHER CONSUMPTION: 4,20 M<sup>2</sup>

#### REFERENCES

**WCDCH001C** OAK COM  
**WCDCH001N** WALNUT COM

#### PRICE

740€  
 960€

#### DIMENSIONS

W 680 H 745 D 590MM

	A	B	C	L
OAK	968€	1163€	1505€	1664€
WALNUT	1188€	1383€	1725€	1884€



### NIDO LOUNGE CHAIR ●●

COMPACT LOUNGE CHAIR WITH STRONG SCULPTURAL PRESENCE. SOFT CURVES AND EXPRESSIVE BASE IN SOLID WOOD.

DESIGNER CHRISTIAN HAAS

FABRIC CONSUMPTION: 3,5 M  
 LEATHER CONSUMPTION: 5,88 M<sup>2</sup>

#### REFERENCES

**WCDCH002C** OAK COM  
**WCDCH002N** WALNUT COM

#### PRICE

1980€  
 2650€

#### DIMENSIONS

W 815 H 745 D 700MM

	A	B	C	L
OAK	2299€	2318€	2592€	3274€
WALNUT	2969€	2988€	3262€	3494€

## CHAIRS


**DEGAS CHAIR** ●●

CHAIR CRAFTED FROM SOLID WOOD, WITH INTRICATE DETAILING ON ITS LEGS AND BACKREST, COMPLEMENTED BY A SELECTION OF PREMIUM FABRICS AND LEATHER UPHOLSTERY.

DESIGNER FABRICIO RONCA

FABRIC CONSUMPTION: 1,00 M  
LEATHER CONSUMPTION: 1,68 M<sup>2</sup>

## REFERENCES

**WCDSR001C** OAK COM  
**WCDSR001N** WALNUT COM

## PRICE

648€  
920€

DIMENSIONS  
W 520 H 815 D 550MM

	A	B	C	L
OAK	739€	817€	954€	1018€
WALNUT	1011€	1089€	1226€	1290€


**BOTERO LOUNGE CHAIR** ●●

LOUNGE CHAIR BUILT WITH A SOLID WOOD FRAME AND UPHOLSTERED IN PREMIUM NATURAL LEATHER.

DESIGNER FABRICIO RONCA

FABRIC CONSUMPTION: 1,50 M  
LEATHER CONSUMPTION: 2,50 M<sup>2</sup>

## REFERENCES

**WCDSR002C** OAK COM  
**WCDSR002N** WALNUT COM  
**WCDSR002CP** OAK/LEATHER  
**WCDSR002NP** WALNUT/LEATHER

## PRICE

1597€  
2215€  
3142€  
3759€

DIMENSIONS  
W 725 H 750 D 790MM


**PALA CHAIR** ●●

PRACTICAL AND COMFORTABLE CHAIR WITH ENVELOPING ELBOW REST AND UPHOLSTERED SEAT PAD.

DESIGNER RAMOS & BASSOLS

FABRIC CONSUMPTION: 1 M  
LEATHER CONSUMPTION: 1,68 M<sup>2</sup>

## REFERENCES

**WCDRB001C** OAK COM  
**WCDRB001N** WALNUT COM

## PRICE

1246€  
1426€

DIMENSIONS  
W 565 H 760 D 540MM

	A	B	C	L
OAK	1337€	1415€	1552€	1616€
WALNUT	1517€	1595€	1732€	1796€


**ORCA CHAIR** ●●

STRONG AND LIGHT CHAIR, AVAILABLE IN OAK OR WALNUT AND WITH UPHOLSTERED SEAT PAD. ASSEMBLED WITH NO SCREWS OR METAL FITTINGS.

DESIGNER STUDIO GUD

## REFERENCES

**WCDGU001C** OAK  
**WCDGU001N** WALNUT  
**WCDGU001CP** OAK/LEATHER  
**WCDGU001NP** WALNUT/LEATHER

## PRICE

1170€  
1456€  
1300€  
1581€

DIMENSIONS  
W 450 H 775 D 560MM


**KUNDERA ARMCHAIR** ●●

SOLID WOOD CHAIR, AVAILABLE IN OAK OR WALNUT. ALSO AVAILABLE WITH UPHOLSTERED SEATPAD.

DESIGNER STUDIO GUD

FABRIC CONSUMPTION: 1 M  
LEATHER CONSUMPTION: 1,68 M<sup>2</sup>

## REFERENCES

**WCDGU002C** OAK  
**WCDGU002N** WALNUT  
**WCDGU004C** OAK COM  
**WCDGU004N** WALNUT COM

## PRICE

858€  
1258€  
1009€  
1373€

DIMENSIONS  
W 555 H 760 D 525MM

	A	B	C	L
OAK	1100€	1178€	1315€	1379€
WALNUT	1464€	1542€	1679€	1743€

## CHAIRS



### KOBE CHAIR ●●

INTERCONNECTED CHAIR WITH A SOLID WOOD FRAME, ELEGANT. COMFORTABLE, STABLE AND ROBUST.

DESIGNER DANIEL SOUSA

FABRIC CONSUMPTION: 1 M  
 LEATHER CONSUMPTION: 1,68 M<sup>2</sup>

#### REFERENCES

**WCDD5001C** OAK COM  
**WCDD5001N** WALNUT COM

DIMENSIONS  
 W 570 H 770 D 555MM

#### PRICE

1150€  
 1490€

	A	B	C	L
OAK	1241€	1319€	1456€	1520€
WALNUT	1581€	1659€	1796€	1860€



### LOOP LOUNGE CHAIR ●

ELEGANT AND COMFORTABLE UPHOLSTERED LOUNGE CHAIR WITH SOLID WOOD FRAME.

DESIGNER DAVID GIRELLI

FABRIC CONSUMPTION: 4 M  
 LEATHER CONSUMPTION: 6,72 M<sup>2</sup>

#### REFERENCES

**WCDDG001C** OAK COM

DIMENSIONS  
 W 1035 H 735 D 770MM

#### PRICE

2380€

	A	B	C	L
OAK	2664€	2976€	3524€	3778€



### MULTIBANQUETA STOOL ●●

MULTIPURPOSE PIECE IN SOLID OAK OR WALNUT. A STOOL THAT HAS THE POSSIBILITY OF BECOMING AN ENDLESS BENCH, A SIDE OR COFFEE TABLE.

DESIGNER SURICATA DESIGN STUDIO

#### REFERENCES

**WBCSD102C** OAK  
**WBCSD102N** WALNUT

DIMENSIONS  
 W 490 H 450 D 300MM

#### PRICE

687€  
 874€

# SOFAS



**PLEASE NOTE:**

DUE TO THE WIDE RANGE OF STATE-OF-THE-ART FABRICS AND LEATHER THAT WE NOW HAVE IN OUR COLLECTION, WE HAVE DIVIDED IT IN FOUR GROUPS (A, B, C, FOR FABRICS AND L FOR LEATHER). THE FABRICS AND LEATHER MUST BE CHOSEN ON PAGES 34 - 51. THERE IS ALWAYS THE POSSIBILITY OF COM.

## SOFAS



### SCAFFOLD SOFA ●●

COMFORTABLE SOFA WITH SURROUNDING WOODEN FRAME IN SOLID WOOD. A SOFA, A BOOKSHELF AND ALSO A DIVIDER, PERFECT FOR AN EXCLUSIVE SPACE. THE PILLOWS EASILY COME OFF AND CAN BE REPLACED.

DESIGNER ANDRÉ TEOMAN STUDIO

FABRIC CONSUMPTION: 15 M  
 LEATHER CONSUMPTION: 25,20 M<sup>2</sup>

#### REFERENCES

**WSFAT001C** OAK COM  
**WSFAT001N** WALNUT COM

#### PRICE

**8112€**  
**9672€**

#### DIMENSIONS

W 2600 H 756 D 1050MM

	A	B	C	L
OAK	9477€	10647€	12702€	13656€
WALNUT	11037€	12207€	14262€	15216€



### BOWIE SOFA ●●

MODULAR SOFA WITH AN IRON AND WOOD STRUCTURE. THE MEMORY FOAM KEEPS THE SOFT AND CLEAN LINES OF THE SOFA, EVEN WITH INTENSE USE. ITS DIMENSIONS CAN VARY BETWEEN A SINGLE ARMCHAIR SEAT, TO A 3 SEAT WIDE SOFA.

DESIGNER GONÇALO CAMPOS

FABRIC CONSUMPTION: **3 SEATS** 10,5 M | **2 SEATS** 8,5 M | **1 SEAT** 5,5 M | **OTTOMAN** 1,6 M

LEATHER CONSUMPTION: **3 SEATS** 17,64 M<sup>2</sup> | **2 SEATS** 14,28 M<sup>2</sup> | **1 SEAT** 9,24 M<sup>2</sup> | **OTTOMAN** 2,69 M<sup>2</sup>

#### REFERENCES

**WSFGC003C** 3 SEATS OAK COM  
**WSFGC003N** 3 SEATS WALNUT COM  
**WSFGC002C** 2 SEATS OAK COM  
**WSFGC002N** 2 SEATS WALNUT COM  
**WSFGC001C** 1 SEAT OAK COM  
**WSFGC001N** 1 SEAT WALNUT COM  
**WSFGC000C** OTTOMAN OAK COM  
**WSFGC000N** OTTOMAN WALNUT COM

#### PRICE

**5512€**  
**5512€**  
**4971€**  
**4971€**  
**2729€**  
**2729€**  
**1514€**  
**1514€**

#### DIMENSIONS

**3 SEATS** W 3005 H 750 D 900MM  
**2 SEATS** W 2200 H 750 D 900MM  
**1 SEATS** W 1130 H 750 D 900MM  
**OTTOMAN** W 900 H 420 D 900MM

3 SEATS	A	B	C	L
OAK	6468€	7287€	8725€	9393€
WALNUT	6468€	7287€	8725€	9393€

2 SEATS	A	B	C	L
OAK	5745€	6408€	7572€	8113€
WALNUT	5745€	6408€	7572€	8113€

1 SEATS	A	B	C	L
OAK	3230€	3659€	4412€	4762€
WALNUT	3230€	3659€	4412€	4762€

OTTOMAN	A	B	C	L
OAK	1660€	1784€	2004€	2106€
WALNUT	1660€	1784€	2004€	2106€

## SOFAS


**DOME SOFA**

MODULAR SOFA, WITH REMOVABLE COVERS, COMPOSED BY A SET OF SIX COMPONENTS: AN OTTOMAN, AN ONE SEATER MODULE AND A CHAISE LONGUE, AS WELL AS A COMPLEMENTARY WOODEN CORNER MODULE, A CENTER MODULE AND A SIDE MODULE.

DESIGNER ERNO DIERCKX

FABRIC CONSUMPTION: 1 SEAT 4 M | CHAISE LONGUE 5,5 M | OTTOMAN 2,9 M

LEATHER CONSUMPTION: 1 SEAT 6,72 M<sup>2</sup> | CHAISE LONGUE 9,24 M<sup>2</sup> | OTTOMAN 4,87 M<sup>2</sup>

1 SEATS	A	B	C	L
OAK	2184€	2496€	3044€	3298€
WALNUT	2262€	2574€	3122€	3376€

OTTOMAN	A	B	C	L
OAK	1574€	1800€	2197€	2381€
WALNUT	1652€	1878€	2275€	2459€

## REFERENCES

REFERENCES	PRICE
WSFED001C 1 SEAT OAK COM	1820€
WSFED001N 1 SEAT WALNUT COM	1898€
WSFED002C CHAISE LONGUE OAK COM	2236€
WSFED002N CHAISE LONGUE WALNUT COM	2340€
WSFED003C OTTOMAN OAK COM	1310€
WSFED003N OTTOMAN WALNUT COM	1388€
WSFED004C CENTER MODULE OAK	1511€
WSFED004N CENTER MODULE WALNUT	1544€
WSFED005C SIDE MODULE OAK	702€
WSFED005N SIDE MODULE WALNUT	827€
WSFED006C CORNER MODULE OAK	1511€
WSFED006N CORNER MODULE WALNUT	1544€
WSFED007C ROUNDED MODULE OAK	1280€
WSFED007N ROUNDED MODULE WALNUT	1670€

## DIMENSIONS

1 SEAT: W 960 H 760 D 1010MM

CHAISE LONGUE: W 960 H 760 D 1720MM

OTTOMAN: W 960 H 470 D 1010MM

CENTER MODULE: W 805 H 280 D 805MM

SIDE MODULE: W 805 H 280 D 250MM

CORNER MODULE: W 805 H 280 D 805MM

ROUNDED MODULE: W 630 H 280 D 840MM

CHAISE LONGUE	A	B	C	L
OAK	2737€	3166€	3919€	4269€
WALNUT	2841€	3270€	4023€	4373€


**SET 1**

INCLUDES  
2\*1 SEAT  
2\*SIDE MODULE

DIMENSIONS  
TOTAL: W 2420 H 760 D 1010MM

CONSUMPTION  
FABRIC: 8 M  
LEATHER: 13,44 M<sup>2</sup>

PRICE COM  
(WITHOUT FABRICS OR LEATHER)

OAK: 5044€  
WALNUT: 5450€


**SET 2**

INCLUDES  
2\*1 SEAT  
1\*CHAISE LONGUE  
1\*SIDE MODULE

DIMENSIONS  
TOTAL: W 3130 H 760 D 1720MM

CONSUMPTION  
FABRIC: 13,5 M  
LEATHER: 22,69 M<sup>2</sup>

PRICE COM  
(WITHOUT FABRICS OR LEATHER)

OAK: 6578€  
WALNUT: 6937€


**SET 3**

INCLUDES  
2\*1 SEAT  
2\*CHAISE LONGUE  
2\*SIDE MODULE

DIMENSIONS  
TOTAL: W 4340 H 760 D 1720MM

CONSUMPTION  
FABRIC: 19 M  
LEATHER: 31,92 M<sup>2</sup>

PRICE COM  
(WITHOUT FABRICS OR LEATHER)

OAK: 9516€  
WALNUT: 10078€


**SET 4**

INCLUDES  
3\*1 SEAT  
1\*CHAISE LONGUE  
1\*SIDE MODULE  
1\*CORNER MODULE

DIMENSIONS  
TOTAL: W 3810 H 760 D 2140MM

CONSUMPTION  
FABRIC: 17,5 M  
LEATHER: 29,4 M<sup>2</sup>

PRICE COM  
(WITHOUT FABRICS OR LEATHER)

OAK: 9908€  
WALNUT: 10379€

## SOFAS



### SET 5 ●●●

INCLUDES  
4\*1 SEAT  
1\*SIDE MODULE  
1\*CORNER MODULE

DIMENSIONS  
TOTAL: W 2850 H 760 D 3100MM

CONSUMPTION  
FABRIC: 16 M  
LEATHER: 26,88 M<sup>2</sup>

PRICE COM  
(WITHOUT FABRICS OR LEATHER)  
OAK: 9492€  
WALNUT: 9963€



### SET 6 ●●●

INCLUDES  
4\*1 SEAT  
1\*CHAISE LONGUE  
1\*OTTOMAN  
1\*SIDE MODULE

DIMENSIONS  
TOTAL: W 3840 H 760 D 3130MM

CONSUMPTION  
FABRIC: 24,4 M  
LEATHER: 40,99 M<sup>2</sup>

PRICE COM  
(WITHOUT FABRICS OR LEATHER)  
OAK: 11528€  
WALNUT: 12123€



### SET 7 ●●●

INCLUDES  
4\*1 SEAT  
1\*CHAISE LONGUE  
1\*OTTOMAN  
1\*SIDE MODULE  
1\*CORNER MODULE

DIMENSIONS  
TOTAL: W 4770 H 760 D 3100MM

CONSUMPTION  
FABRIC: 24,4 M  
LEATHER: 40,99 M<sup>2</sup>

PRICE COM  
(WITHOUT FABRICS OR LEATHER)  
OAK: 13038€  
WALNUT: 13666€



### SET 8 ●●●

INCLUDES  
2\*1 SEAT  
1\*CHAISE LONGUE  
3\*OTTOMAN  
2\*SIDE MODULE

DIMENSIONS  
TOTAL: W 3310 H 760 D 2730MM

CONSUMPTION  
FABRIC: 22,2 M  
LEATHER: 37,3 M<sup>2</sup>

PRICE COM  
(WITHOUT FABRICS OR LEATHER)  
OAK: 11211€  
WALNUT: 11929€



### SET 9 ●●●

INCLUDES  
5\*1 SEAT  
1\*CHAISE LONGUE  
1\*CENTER MODULE  
1\*SIDE MODULE  
1\*CORNER MODULE

DIMENSIONS  
TOTAL: W 5575 H 760 D 3100MM

CONSUMPTION  
FABRIC: 28,4 M  
LEATHER: 47,71 M<sup>2</sup>

PRICE COM  
(WITHOUT FABRICS OR LEATHER)  
OAK: 15058€  
WALNUT: 15719€



### SET 10 ●●●

INCLUDES  
3\*1 SEAT  
1\*CHAISE LONGUE  
3\*OTTOMAN  
1\*CENTER MODULE  
1\*SIDE MODULE  
1\*CORNER MODULE

DIMENSIONS  
TOTAL: W 4770 H 760 D 4895MM

CONSUMPTION  
FABRIC: 26,2 M  
LEATHER: 44,02 M<sup>2</sup>

PRICE COM  
(WITHOUT FABRICS OR LEATHER)  
OAK: 15349€  
WALNUT: 16089€



### SET 11 ●●●

INCLUDES  
5\*1 SEAT  
2\*OTTOMAN  
1\*CENTER MODULE  
1\*SIDE MODULE  
1\*CORNER MODULE

DIMENSIONS  
TOTAL: W 4615 H 760 D 3100MM

CONSUMPTION  
FABRIC: 25,8 M  
LEATHER: 43,34 M<sup>2</sup>

PRICE COM  
(WITHOUT FABRICS OR LEATHER)  
OAK: 15443€  
WALNUT: 16182€

# TABLES



## DINING TABLES



### RAIA TABLE ●●

WOODEN LIGHT AND ELEGANT TABLE WITH FIXED TOP. AVAILABLE IN TWO DIFFERENT DIMENSIONS.

DESIGNER STUDIO GUD

#### REFERENCES

**WMJGU001C** OAK 1800  
**WMJGU001N** WALNUT 1800  
**WMJGU002C** OAK 2000  
**WMJGU002N** WALNUT 2000

#### PRICE

4347€  
6406€  
4691€  
6864€

#### DIMENSIONS

W 1800 H 750 D 950MM  
W 2000 H 750 D 1000MM



### SOMA TABLE ●●

SOLID WOOD DINING TABLE WITH ELEGANT WOOD JOINERY DETAILS THAT UNDERLINES THE PERSONALITY OF THE TABLE. AVAILABLE IN THREE DIFFERENT DIMENSIONS.

DESIGNER CHRISTIAN HAAS

#### REFERENCES

**WMJCH001C** OAK 1800  
**WMJCH001N** WALNUT 1800  
**WMJCH002C** OAK 2400  
**WMJCH002N** WALNUT 2400  
**WMJCH003C** OAK 3000  
**WMJCH003N** WALNUT 3000

#### PRICE

4862€  
7644€  
6178€  
8684€  
7644€  
9746€

#### DIMENSIONS

W 1800 H 750 D 1000MM  
W 2400 H 750 D 1100MM  
W 3000 H 750 D 1200MM



### AMOS TABLE ●●

DINING TABLE WITH SOLID WOOD TOP AND CONICAL LEGS. AVAILABLE IN THREE DIFFERENT DIMENSIONS IN OAK OR WALNUT.

DESIGNER CHRISTIAN HAAS

#### REFERENCES

**WMJCH004C** OAK 1800  
**WMJCH004N** WALNUT 1800  
**WMJCH005C** OAK 2400  
**WMJCH005N** WALNUT 2400  
**WMJCH006C** OAK 3000  
**WMJCH006N** WALNUT 3000

#### PRICE

5775€  
6930€  
6090€  
7770€  
7560€  
9240€

#### DIMENSIONS

W 1800 H 750 D 1000MM  
W 2400 H 750 D 1100MM  
W 3000 H 750 D 1200MM



### ANCHOR TABLE ●●

LUXURIOUS DINING TABLE AVAILABLE IN THREE SIZES, FEATURING A SOLID WOOD TOP SUPPORTED BY TWO ROUNDED TRAVERTINE LEGS.

DESIGNER DAN YEFFET

#### REFERENCES

**WMJDY002CT** OAK 2000  
**WMJDY002NT** WALNUT 2000  
**WMJDY003CT** OAK 2400  
**WMJDY003NT** WALNUT 2400  
**WMJDY004CT** OAK 3000  
**WMJDY004NT** WALNUT 3000

#### PRICE

19080€  
24160€  
22200€  
26500€  
24000€  
29000€

#### DIMENSIONS

W 2000 H 730 D 1000MM  
W 2400 H 730 D 1100MM  
W 3000 H 730 D 1200MM



### VASCO TABLE ●●

ROUND TABLE WITH A STRUCTURE IN SOLID WOOD, SUPPORTED BY A CONICAL BASE, AND THREE OPTIONS FOR THE TOP: GLASS, MARBLE OR CERAMICS.

DESIGNER VARIAFORMA

#### REFERENCES

**WMJVF001CV** OAK GLASS (BRONZE)  
**WMJVF001NV** WALNUT GLASS (BRONZE)  
**WMJVF001CC** OAK CERAMICS  
**WMJVF001NC** WALNUT CERAMICS

#### PRICE

4800€  
6600€  
5190€  
6600€

#### DIMENSIONS

Ø1500 H 750MM



### NURIA EXTENDABLE TABLE ●●

AN EXTENDABLE DINING TABLE WITH A SOLID CONSTRUCTION THAT EXPANDS FROM 6 TO 10 SEATING PLACES.

DESIGNER GONÇALO CAMPOS

#### REFERENCES

**WMJGC015C** OAK  
**WMJGC015N** WALNUT

#### PRICE

4840€  
5440€

#### DIMENSIONS

W 1800 + 2\*600 H 750 D 1000MM

## COFFEE | SIDE TABLES


**KAYA COFFEE TABLE**

A SOLID WOOD STRUCTURE WITH A MARBLE TOP AND BRASS DETAILS.

DESIGNER ÜMIT ÇAĞLAR

## REFERENCES

REFERENCES	PRICE
<b>WMCUC001C</b> OVAL COFFEE TABLE OAK STANDARD MARBLE	1980€
<b>WMCUC001N</b> OVAL COFFEE TABLE WALNUT STANDARD MARBLE	2230€
<b>WMCUC001CP</b> OVAL COFFEE TABLE OAK PREMIUM MARBLE	2880€
<b>WMCUC001NP</b> OVAL COFFEE TABLE WALNUT PREMIUM MARBLE	3130€
<b>WMCUC002C</b> ROUND COFFEE TABLE OAK STANDARD MARBLE	1434€
<b>WMCUC002N</b> ROUND COFFEE TABLE WALNUT STANDARD MARBLE	1560€
<b>WMCUC002CP</b> ROUND COFFEE TABLE OAK PREMIUM MARBLE	1956€
<b>WMCUC002NP</b> ROUND COFFEE TABLE WALNUT PREMIUM MARBLE	2082€

## DIMENSIONS

W 1448 H 320 D 788MM  
W 838 H 420 D 838MM


**ANCHOR COFFEE/SIDE TABLE**

SET OF TABLES COMPRISING TWO SIDE TABLES AND A COFFEE TABLE, CRAFTED FROM A COMBINATION OF WOOD AND STONE.

DESIGNER DAN YEFFET

## REFERENCES

REFERENCES	PRICE
<b>WMC DY001C</b> TALL SIDE TABLE OAK	2200€
<b>WMC DY001N</b> TALL SIDE TABLE WALNUT	3100€
<b>WMC DY001CT</b> TALL SIDE TABLE TRAVERTINE/OAK	2640€
<b>WMC DY001NT</b> TALL SIDE TABLE TRAVERTINE/WALNUT	3100€
<b>WMC DY002C</b> SIDE TABLE OAK	1440€
<b>WMC DY002N</b> SIDE TABLE WALNUT	2250€
<b>WMC DY002CT</b> SIDE TABLE TRAVERTINE/OAK	1920€
<b>WMC DY002NT</b> SIDE TABLE TRAVERTINE/WALNUT	2250€
<b>WMC DY003CT</b> COFFEE TABLE TRAVERTINE/OAK	3900€
<b>WMC DY003NT</b> COFFEE TABLE TRAVERTINE/WALNUT	4640€

## DIMENSIONS

W 625 H 530 D 485MM  
W 530 H 450 D 412MM  
W 1100 H 320 D 852MM


**HEXA COFFEE /SIDE TABLE**

SOLID WOOD COFFEE/SIDE TABLE. IT CAN BE USED VERTICAL, HORIZONTALLY OR AS A MODULAR SYSTEM ALLOWING IT TO FILL INTO DIFFERENT SPACES OR COMBINE DIFFERENT WOODS.

DESIGNER DANIEL VIEIRA

## REFERENCES

REFERENCES	PRICE
<b>WMC DV001C</b> OAK	1196€
<b>WMC DV001N</b> WALNUT	1466€

## DIMENSIONS

W 545 H 355 D 630MM


**MEMÓRIA COFFEE TABLE**

COFFEE TABLE WITH IRON PIPES AND WOOD, BOTH ON BOTTOM AND TOP.

DESIGNER WEWOOD DESIGN CENTER

## REFERENCES

REFERENCES	PRICE
<b>WMC WW003CF</b> OVAL TABLE OAK VENEERED	4614€
<b>WMC WW003NF</b> OVAL TABLE WALNUT VENEERED	5037€

## DIMENSIONS

W 2000 H 395 D 1200MM


**CORNER COFFEE TABLE**

MARBLE TOP TABLES WITH A STRUCTURE IN SOLID WOOD. AVAILABLE IN ROUND OR RECTANGULAR FORMS AND DIFFERENT TYPES OF WOOD AND MARBLE.

DESIGNER PIERRE DUBOURG

## REFERENCES

REFERENCES	PRICE
<b>WMC PD001C</b> ROUND TABLE OAK STANDARD MARBLE	2435€
<b>WMC PD001N</b> ROUND TABLE WALNUT STANDARD MARBLE	2820€
<b>WMC PD001CP</b> ROUND TABLE OAK PREMIUM MARBLE	3365€
<b>WMC PD001NP</b> ROUND TABLE WALNUT PREMIUM MARBLE	3600€

## DIMENSIONS

Ø 1200 H 400MM

<b>WMC PD002C</b> RECTANGULAR TABLE OAK STANDARD MARBLE	2460€
<b>WMC PD002N</b> RECTANGULAR TABLE WALNUT STANDARD MARBLE	2780€
<b>WMC PD002CP</b> RECTANGULAR TABLE OAK PREMIUM MARBLE	2970€
<b>WMC PD002NP</b> RECTANGULAR TABLE WALNUT PREMIUM MARBLE	3280€

## DIMENSIONS

W 1400 H 400 D 900MM

## COFFEE | SIDE TABLES



### AMOS COFFEE/SIDE TABLE

SERIES OF TABLES AVAILABLE IN TWO DIFFERENT SIZES. COMPOSED BY A SOLID WOOD TOP AND A CONICAL BASE.

DESIGNER CHRISTIAN HAAS

#### REFERENCES

**WMCCH001C** MEDIUM TABLE OAK  
**WMCCH001N** MEDIUM TABLE WALNUT  
**WMCCH002C** LARGE TABLE OAK  
**WMCCH002N** LARGE TABLE WALNUT

#### DIMENSIONS

W 800 H 350 D 800MM  
W 1000 H 290 D 1000MM

#### PRICE

2100€  
2830€  
2640€  
3250€



### RE-FORM COFFEE/SIDE TABLE

SERIES OF COFFEE AND SIDE TABLES OF DIFFERENT SIZES, DESIGNED TO PROVIDE UTMOST VERSATILITY AS EITHER STANDALONE PIECES OR ARTISTIC COMBINATIONS.

DESIGNER ALAIN GILLES

#### REFERENCES

**WMCAG001C** TALL SIDE TABLE OAK  
**WMCAG001N** TALL SIDE TABLE WALNUT  
**WMCAG002C** SIDE TABLE OAK  
**WMCAG002N** SIDE TABLE WALNUT  
**WMCAG003C** COFFEE TABLE OAK  
**WMCAG003N** COFFEE TABLE WALNUT

#### DIMENSIONS

W 300 H 500 D 400MM  
W 300 H 375 D 400MM  
W 800 H 400 D 800MM

#### PRICE

1000€  
1200€  
900€  
1100€  
1436€  
1896€

## BEDSIDE TABLES



### DUPLEX BEDSIDE TABLE

SOLID WOOD BEDSIDE TABLE WITH A REDUCED AND MINIMAL GRAPHICAL STATEMENT.

DESIGNER CHRISTIAN HAAS

#### REFERENCES

**WBTCH001C** OAK  
**WBTCH001N** WALNUT

#### DIMENSIONS

W 550 H 450 D 550MM

#### PRICE

732€  
1370€



### TRIPLEX BEDSIDE TABLE

SOLID WOOD BEDSIDE TABLE BOASTING A RESTRAINED AND MINIMALISTIC VISUAL EXPRESSION, WITH THREE STORAGE LEVELS.

DESIGNER CHRISTIAN HAAS

#### REFERENCES

**WBTCH002C** OAK  
**WBTCH002N** WALNUT

#### DIMENSIONS

W 550 H 450 D 550MM

#### PRICE

1035€  
1690€



### CRIADO-MUDO BEDSIDE TABLE

SOLID WOOD BEDSIDE TABLE WITH A PRACTICAL DRAWER AND A CONVENIENT TRAY IN ITS BASE.

DESIGNER WEWOOD DESIGN CENTER

#### REFERENCES

**WBTWW001C** OAK  
**WBTWW001N** WALNUT

#### DIMENSIONS

W 500 H 550 D 400MM

#### PRICE

1257€  
1710€

# STORAGE



## STORAGE



### BRUTALIST SIDEBOARD

SIDEBOARD WITH TWO DOORS HOUSING ADJUSTABLE SHELVES WITHIN, ALONGSIDE MIDDLE DRAWERS, OFFERING AMPLE STORAGE POSSIBILITIES FOR A DIVERSE ARRAY OF ITEMS.

DESIGNER ERNO DIERCKX

#### REFERENCES

**WAPED001C** OAK 1850  
**WAPED001N** WALNUT 1850  
**WAPED002C** OAK 2400  
**WAPED002N** WALNUT 2400

#### DIMENSIONS

W 1850 H 640 D 450MM  
W 2400 H 640 D 450MM

#### PRICE

5044€  
6188€  
6365€  
7956€



### SCARPA SIDEBOARD

SIDEBOARD IN SOLID WOOD WITH TWO HIDDEN DRAWERS AND FOUR DIVISIONS DIVIDED BY ADJUSTABLE SHELVES. THE DETAILS ON THE DOORS ARE ASSEMBLED BY HAND.

DESIGNER WEWOOD DESIGN CENTER

#### REFERENCES

**WAPWW201C** OAK  
**WAPWW201TN** WALNUT

#### DIMENSIONS

W 1860 H 840 D 450MM

#### PRICE

5252€  
6586€



### CAROUSEL SIDEBOARD

SIDEBOARD WITH SOLID WALNUT FRAME WITH MARBLE TOP AND A TURNTABLE BAR IN THE MIDDLE.

DESIGNER LEONHARD PFEIFER

#### REFERENCES

**WAPLP401CM** OAK STANDARD MARBLE  
**WAPLP401NM** WALNUT STANDARD MARBLE  
**WAPLP401CMP** OAK PREMIUM MARBLE  
**WAPLP401NMP** WALNUT PREMIUM MARBLE

#### DIMENSIONS

W 2050 H 810 D 580MM

#### PRICE

9412€  
10598€  
10467€  
11773€



### RADIO MEDIA UNIT

MEDIA UNIT IN SOLID WOOD WITH PERFORATED SLIDING DOORS AND HOLES IN THE BACK THAT ALLOWS ITS USE CLOSED KEEPING THE DEVICES HIDDEN.

DESIGNER WEWOOD DESIGN CENTER

#### REFERENCES

**WAPWW203C** OAK  
**WAPWW203N** WALNUT

#### DIMENSIONS

W 1600 H 470 D 400MM

#### PRICE

2288€  
3068€



### MISTER SIDEBOARD

VERSATILE PIECE WITH A STRUCTURE AND DOOR IN SOLID WALNUT. HERRINGBONE PATTERN IN THE DOOR IN SOLID OAK. FULLY ADJUSTABLE INTERIORS THAT CAN BE TURNED INTO A BAR, A DESK OR SIMPLY A SIDEBOARD.

DESIGNER DANIEL DUARTE

#### REFERENCE

**WAPDD101N**

#### DIMENSIONS

W 800 H 1230 D 350MM

#### PRICE

5439€

## STORAGE


**TOUCH CHEST OF DRAWERS** ●●

CHEST OF DRAWERS WITH EXTERIOR IN SOLID WOOD AND INTERIOR IN NATURAL VENEERED MDF. BASE MADE OF IRON WITH MATTE ELECTROSTATIC PAINT.

DESIGNER SURICATA DESIGN STUDIO

## REFERENCES

**WAPSD101C** OAK  
**WAPSD101N** WALNUT

DIMENSIONS  
W 545 H 1475 D 545MM

## PRICE

6760€  
8996€


**CONTADOR II SIDEBORD** ●●

SOLID WOOD TIMELESS PIECE THAT PROVIDES A PRACTICAL STORAGE SPACE. IT IS COMPOSED BY DRAWERS OF DIFFERENT DIMENSIONS DOORS, A TRAY AND A LOWER SHELF.

DESIGNER WEWOOD DESIGN CENTER

## REFERENCES

**WAPWW305C** OAK  
**WAPWW305N** WALNUT

DIMENSIONS  
W 885 H 1460 D 370MM

## PRICE

5928€  
6760€


**CONTADOR SPECIAL SIDEBORD** ●●

10TH ANNIVERSARY SPECIAL EDITION OF CONTADOR SIDEBORD WITH BRASS AND LEATHER DETAILS. LIMITED TO 10 UNITS.

DESIGNER WEWOOD DESIGN CENTER

## REFERENCES

**WAPWW306N** WALNUT

DIMENSIONS  
W 885 H 1460 D 370MM

## PRICE

7779€

# MATERIALS & COLORS

The choice of the materials, fabrics and colors is what gives each piece its expression and plays an important role in the interior design project.

Along with our collection, we have our own selection of materials like wood and marble as well as a selection of different types of leather and fabrics.

You can select from a large variety of colors, materials and finishes to tailor our pieces and adapt it to the look and feel of different spaces.

Due to typographical and computer screens variations, we cannot guarantee that colors shown here are truly representative of our products.

Prior to purchasing, please contact us. We recommend that you order a single sample of any material or purchase a box with all the materials.

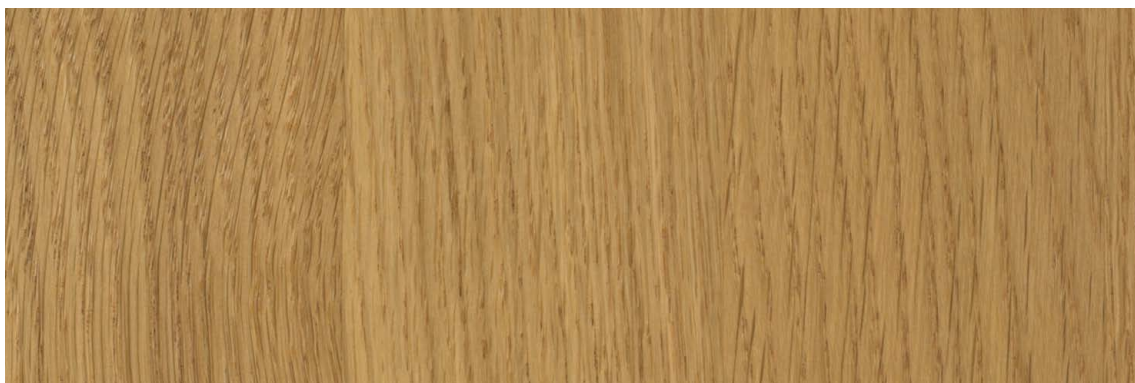
# WOOD



# WOOD

---

## OAK | NATURA



## OAK | WHITE OIL



## OAK | SMOKED OPEN PORE



# WOOD

---

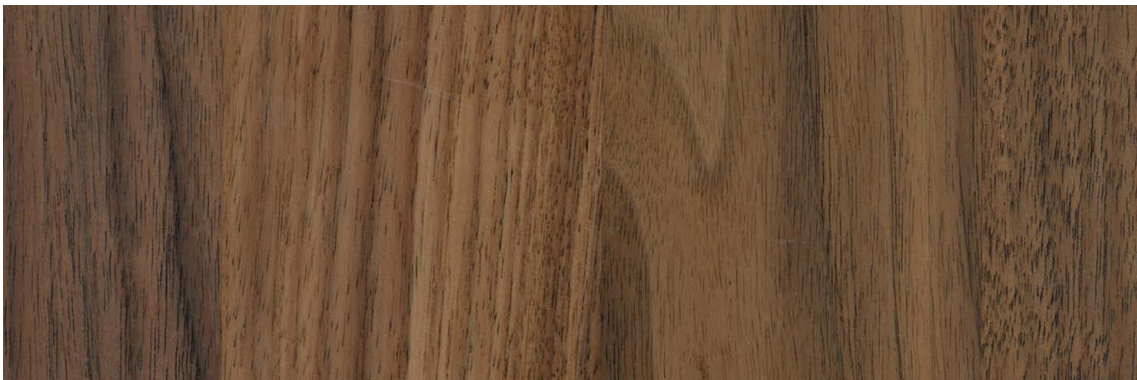
**OAK** | GOLDEN BROWN



**WALNUT** | NATURA



**WALNUT** | UV PROTECT



RUA D. AFONSO HENRIQUES 77 GANDRA, APARTADO 10  
4589 - 907 REBORDOSA PORTUGAL  
T +351 224 114 050 | M +351 932 492 434

[WWW.WEWOOD.EU](http://WWW.WEWOOD.EU) | [INFO@WEWOOD.EU](mailto:INFO@WEWOOD.EU)

# MARBLE



# MARBLE

---

## STANDARD MARBLE

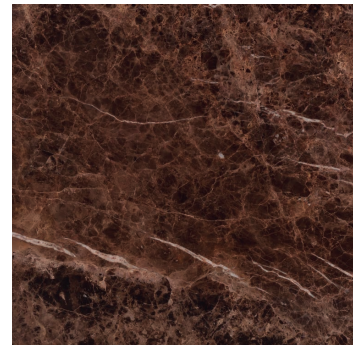
---



ESTREMOZ



NERO MARQUINA



EMPERADOR

## PREMIUM MARBLE

---



CALACATTA

## STONE

---



TRAVERTINE

\*ONLY AVAILABLE FOR LILY TABLES

RUA D. AFONSO HENRIQUES 77 GANDRA, APARTADO 10  
4589 - 907 REBORDOSA PORTUGAL  
T +351 224 114 050 | M +351 932 492 434

[WWW.WEWOOD.EU](http://WWW.WEWOOD.EU) | [INFO@WEWOOD.EU](mailto:INFO@WEWOOD.EU)

# FABRICS

## GROUP A



## FABRICS | GROUP A

---

### CAMPO

**Composition** 90% PL | 10% PC

**Width** 140cm | 55,12"

**Martindale** 145 000

**Flame Resistance** BS5852-0 (UK)

**More Features** Water repellent



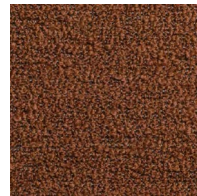
TAALCAMPO02



TAALCAMPO03



TAALCAMPO05



TAALCAMPO09



TAALCAMPO13



TAALCAMPO14



TAALCAMPO15



MORE COLOURS

### CHALET

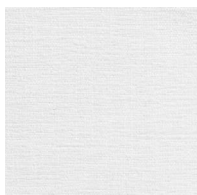
**Composition** 100% PL

**Width** 140cm | 55,12"

**Martindale** 50 000

**Flame Resistance** BS5852-0 (UK)

**More Features** Water repellent



TAALCHALET01



TAALCHALET02



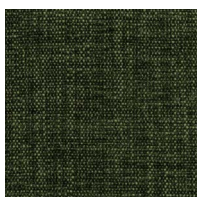
TAALCHALET03



TAALCHALET13



TAALCHALET16



TAALCHALET18



TAALCHALET19



MORE COLOURS

## FABRICS | GROUP A

### AMADEUS

**Composition** 22% PC | 22% WV | 22% PL | 14% VI | 13% CO | 7% LI

**Width** 140cm | 55,12"

**Martindale** 30 000

**Flame Resistance** BS5852-0 (UK) | EN1021-1 (EU) | NFPA260 (USA)

**More features** Natural fibers



TAELEMADEUS0025



TAELEMADEUS0225



TAELEMADEUS0520



TAELEMADEUS0762



TAELEMADEUS0855



TAELEMADEUS1534



MORE COLOURS

### MADISON

**Composition** 63% CO | 37% LI

**Width** 140cm | 55,12"

**Martindale** 32 500

**Flame Resistance** BS5852-0 (with FR foam) (UK)

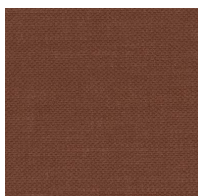
**More Features** Natural fibers



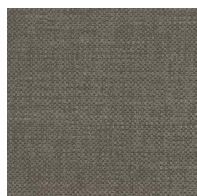
TADTMADISON12035



TADTMADISON12053



TADTMADISON12132



TADTMADISON12143



TADTMADISON12151



TADTMADISON24196



TADTMADISON24197



TADTMADISON24251



MORE COLOURS

## FABRICS | **GROUP A**

---

### **ALMO**

**Composition** 78% PL | 10 % PC | 7% LI | 5% WO

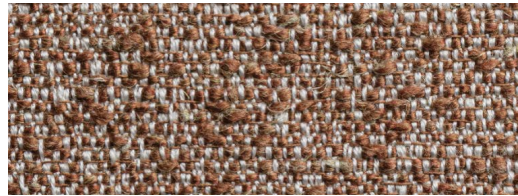
**Width** 140cm | 55,12"

**Martindale** 100 000

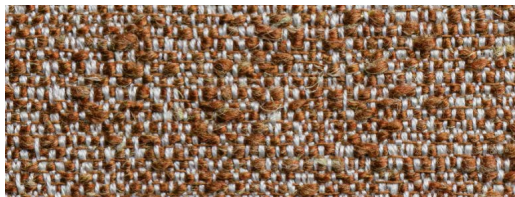
**Flame Resistance** BS5852-0 (UK)



TAALALMO03



TAALALMO05



TAALALMO06



TAALALMO09



MORE COLOURS

## FABRICS | GROUP A

---

### WAIKIKI

**Composition** 100% PL

**Width** 140cm | 55,12"

**Martindale** 35 000

**Flame Resistance** N/A

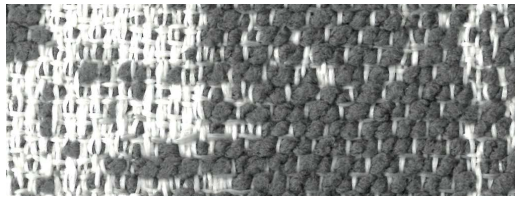
**More Features** Water and oil repellency | Antibacterial



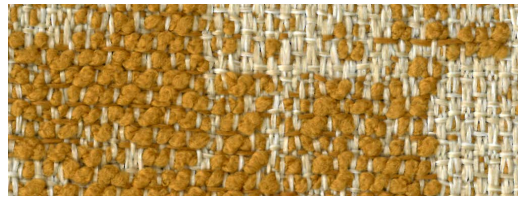
TAAFWAIKIKIBLANCO



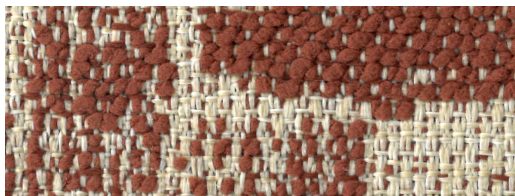
TAAFWAIKIKIARENA



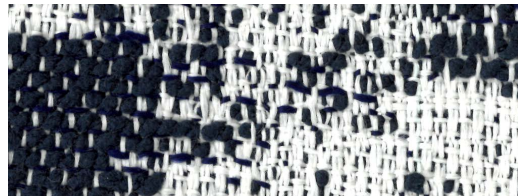
TAAFWAIKIKIALUMINIO



TAAFWAIKIKIMOSTAZA



TAAFWAIKIKITEJA



TAAFWAIKIKIMARINO

# FABRICS

## GROUP B



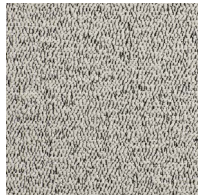
## FABRICS | GROUP B

### LOOP LOOP

**Composition** 28% PL | 25% PC | 24% WO | 23% rCO  
**Width** 140cm | 55,12”  
**Martindale** 52 000  
**Flame Resistance** BS5852-0 (UK) | TB 117-2013 (USA)  
**More Features** Natural fibers



TBDDLOOPLOOP002



TBDDLOOPLOOP005



TBDDLOOPLOOP008



MORE COLOURS

### MOLERA

**Composition** 44% CO | 30% PES | 17% LI | 5% BAMB | 4% PA  
**Width** 136cm | 53,54”  
**Martindale** 40 000  
**Flame Resistance** N/A



TBDMOLERA001



TBDMOLERA002



TBDMOLERA005



TBDMOLERA007



MORE COLOURS

### KYRI

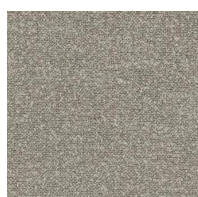
**Composition** 63% VI | 27% LI | 7% PL | 3% PA  
**Width** 140cm | 55,12”  
**Martindale** 40 000  
**Flame Resistance** BS5852-0 (UK) | CAL 117 (USA) | EN1021-1 (EU) | NFPA260 (USA) | TB 117-2013 (USA)  
**More Features** Reach compliant | PFAS free



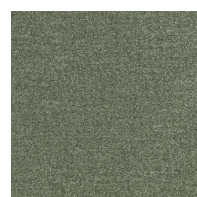
TBROKYRI09



TBROKYRI12



TBROKYRI21



TBROKYRI39



MORE COLOURS

## FABRICS | GROUP B

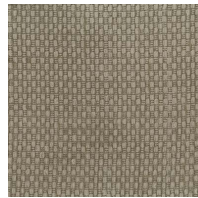
---

### LORTON

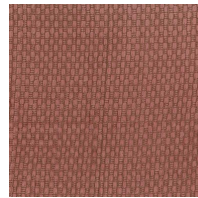
**Composition** 100% rPET  
**Width** 144cm | 56,69"  
**Martindale** 48 000  
**Flame Resistance** BS5852-0 (UK)



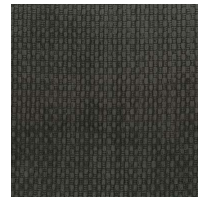
TBOLLORTON01



TBOLLORTON04



TBOLLORTON05



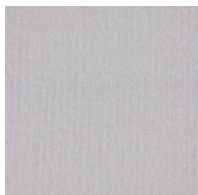
TBOLLORTON12



MORE COLOURS

### TÁLIO

**Composition** 100% CO | 38% VI | 15% PL | 5% LI  
**Width** 140cm | 55,12"  
**Martindale** 25 000  
**Flame Resistance** N/A



TBPOTALIO01



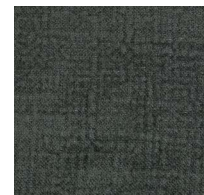
TBPOTALIO02



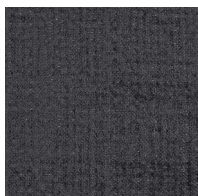
TBPOTALIO03



TBPOTALIO04



TBPOTALIO05



TBPOTALIO06



TBPOTALIO07

## FABRICS | GROUP B

---

### SIÈGE

**Composition** 100% CO

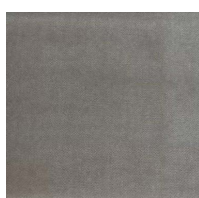
**Width** 140cm | 55,12"

**Martindale** 40 000

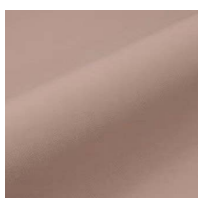
**FLAME RESISTANCE** N/A (FR TREATMENT AVAILABLE, SUBJECT TO INQUIRY)



TBALSIEGE0043



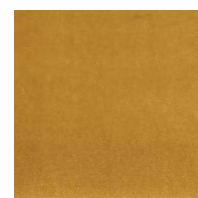
TBALSIEGE0083



TBALSIEGE1601



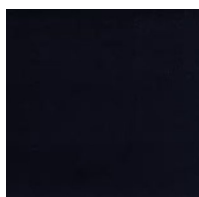
TBALSIEGE0452



TBALSIEGE0166



TBALSIEGE7033



TBALSIEGE0668



TBALSIEGE0881



MORE COLOURS

# FABRICS

## GROUP C



## FABRICS | GROUP C

### SYCOMORE

**Composition** 32% AC | 19% CO | 17% VI | 8% LI | 7% ALP | 7% VW | 6% PL | 3% PO | 1% EL

**Width** 140cm | 55,12"

**Martindale** 30 000

**Flame Resistance** BS5852-0 (UK) | EN1021-1 (EU) | NFPA260 (USA) | TB 117-2013 (USA)



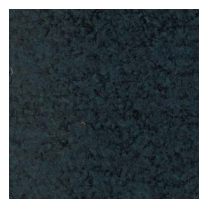
TCPFSYCOMORE001



TCPFSYCOMORE002



TCPFSYCOMORE003



TCPFSYCOMORE004



TCPFSYCOMORE005



TCPFSYCOMORE006

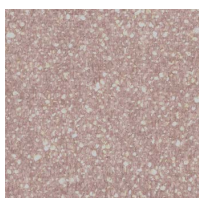
### EMBER

**Composition** 60% PL | 40% PC

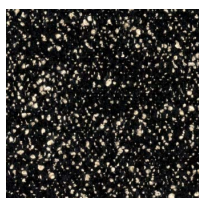
**Width** 140cm | 55,12"

**Martindale** 100 000

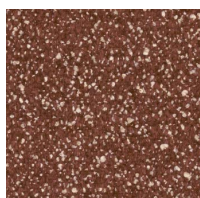
**Flame Resistance** CAL 117 (USA) | EN1021-1 (EU) | NFPA260 (USA)



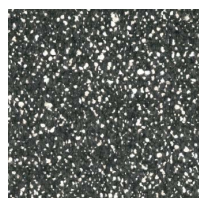
TCKDEMBER01



TCKDEMBER02



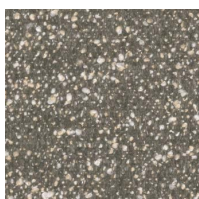
TCKDEMBER03



TCKDEMBER04



TCKDEMBER05



TCKDEMBER07



MORE COLOURS

## FABRICS | **GROUP C**

---

### **KUBA**

**Composition** 60% VI | 40% CO

**Width** 138 cm | 54,33"

**Martindale** 50 000

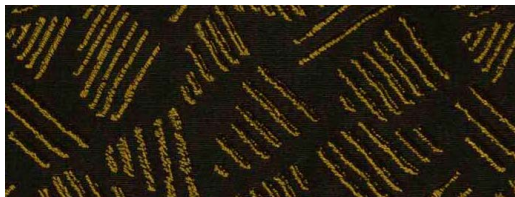
**Flame Resistance** FFFSR 1988 (UK)



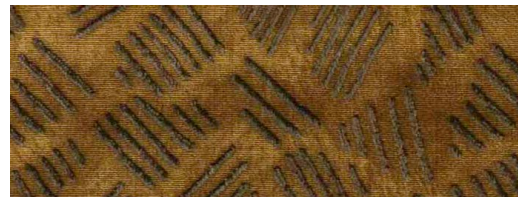
TCLKUBA01



TCLKUBA03



TCLKUBA04



TCLKUBA05



MORE COLOURS

## FABRICS | GROUP C

---

### SAPPHEO

**Composition** 46% VI | 21% WO | 21% PC | 12% PA

**Width** 142cm | 55,91"

**Martindale** 25 000

**Flame Resistance** CAL 117 (USA) | EN1021-1 (EU) | NFPA260 (USA)

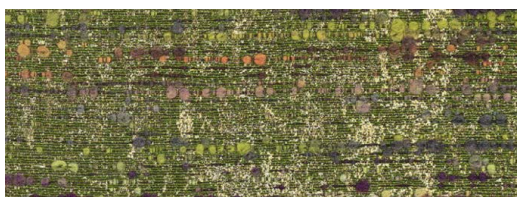
**More Features** Special finish: anti-shrink, anti-pilling dimout option on request



TCZCSAPPHEO001



TCZCSAPPHEO002



TCZCSAPPHEO003



MORE COLOURS

# LEATHER



# LEATHER

---

## TEXTURE

**Composition** 100% LH

**Width** 5,0m<sup>2</sup>

**Martindale** 50 000

**Pilling** N/A

**Flame Resistance** BS5852-0 (UK) | EN1021-1 (EU)



LELEXTURE6203



LELEXTURE6207



LELEXTURE6212



LELEXTURE6213



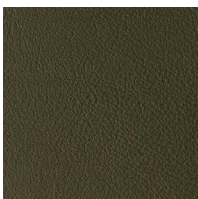
LELEXTURE6228



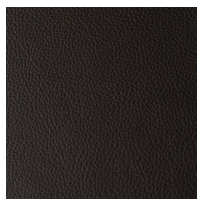
LELEXTURE6241



LELEXTURE6252



LELEXTURE6258



LELEXTURE6293



MORE COLOURS

# LEATHER

---

## PLAIN

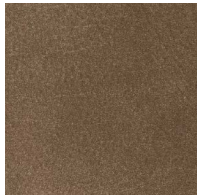
**Composition** 100% LH

**Width** 5,0m<sup>2</sup>

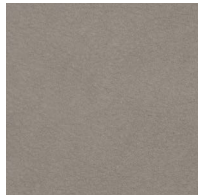
**Martindale** 50 000

**Pilling** N/A

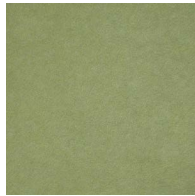
**Flame Resistance** BS5852-0 (UK) | EN1021-1 (EU)



LELPLAIN24003



LELPLAIN24009



LELPLAIN24017



LELPLAIN24018



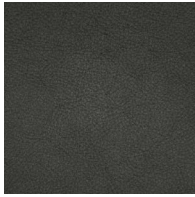
LELPLAIN24021



LELPLAIN24024



LELPLAIN24025



LELPLAIN24027



LELPLAIN24029



MORE COLOURS

## SADDLE LEATHER

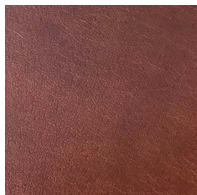
**Composition** 100% LH

**Width** 1,0/2,0m<sup>2</sup>

**Martindale** 50 000

**Pilling** N/A

**Flame Resistance** BS5852-0 (UK) | EN1021-1 (EU)



AVELÃ



NATURAL



BLACK



## **GENERAL TERMS AND CONDITIONS**

BY ORDERING WEWOOD PRODUCTS YOU ARE AGREEING TO ABIDE BY THESE TERMS AND CONDITIONS:

### **PURPOSE AND DEFINITION**

These Terms and Conditions define the collaboration between Wewood – Portuguese Joinery, hereinafter referred to in this document as “Wewood”, and the Reseller or customer.

These Terms and Conditions take precedent over any oral or written agreement, quote, order confirmation, or invoice.

The term Reseller is used in this document to describe a company which buys products from Wewood with the purpose of reselling them to a Customer. Any Reseller must obtain written permission to sell Wewood products. These Terms and Conditions define the Reseller’s non-exclusive rights to sell Wewood products in a limited geographical area as agreed with Wewood. In addition, a written confirmation must be issued by Wewood specifying the right to sell Wewood products online.

Resellers offering Wewood products online are regulated by additional Terms and Conditions for e-commerce as specified in this document.

The term Customer used in this document is intended to describe a person or company purchasing Wewood products from the Reseller or directly to Wewood.

### **COMMERCIAL RESTRICTIONS**

Wewood is a high-end design brand which requires all Resellers to present the brand and our products in accordance with high standards of similar high-end design brands. Wewood will continuously assess the Reseller both qualitatively and quantitatively to evaluate and determine the Reseller’s continued right to represent the brand and sell Wewood products.

The Reseller shall comply with all applicable laws, rules and regulations of government and other bodies, both nationally and internationally, including classifications requirements, laws, rules and any other regulations or policies which apply in the location where the sales, services and operational work is performed by the Reseller.

The Reseller has the right to sell only the products listed in Wewood Price List. Wewood reserves the right to discontinue products at any point in time. See Wewood website for reference.

### **INTERNATIONAL DISTRIBUTION**

The Reseller can actively promote and resell Wewood products internationally only as agreed with Wewood in writing, and only from the country where the Reseller’s legal entity is officially registered.

Resellers are not allowed to actively promote and resell Wewood products in markets serviced by exclusive distributors.

If the Reseller maintains subsidiaries, or establishes or acquire separate legal entities in other countries than the country where the Reseller’s legal entity is officially registered, including third party subcontractors, these new entities have to be separately approved as a Reseller in writing by Wewood before any exhibit, promotion, or resale of Wewood products may occur. Wewood withholds the full right to refuse to accept trade with such entities.

## PRICES

Each stated price corresponds to a single piece. The price of Wewood products follow the current Price List at any time. Note that all prices are periodically subject to change.

Unless otherwise stated, all prices in any quotation or order confirmation are exclusive of shipping and VAT. See Wewood Shipping Terms & Conditions for further details.

Where no price has been quoted, or a quoted price is no longer valid, or errors have been made in the quotation or order confirmation, the price listed in Wewood Price List at the time of the order acceptance date will be the valid price of the product.

For more information, please get in touch with our sales department.

## ORDER AND ORDER CONFIRMATION

All orders must be sent to Wewood by email, and have the complete information on the selected product(d) and its/their finishing's.

Once an order/quote request is placed by the Reseller/ Customer, an order confirmation/quote will be sent to the Reseller/ Customer no later than two (2) working days after receiving the order in writing. The order confirmation includes item specification, price, name of the Reseller/Customer, payment terms, delivery terms, delivery address and pickup /delivery date. No order is valid until the written order confirmation is issued by Wewood. Any date indicated on any order confirmation is to be considered as an estimate only, and Wewood has no liability related to any change in the indicated delivery dates.

The Reseller/Customer is responsible for verifying all order confirmations issued by Wewood and must inform Wewood of any changes to the order, or errors in the order confirmation, within one (1) working day after receiving the order confirmation, otherwise the order will be effectuated. Specific shipping terms vary depending on which country the order is related to. See Wewood Shipping Terms & Conditions for further details.

The Reseller/Customer is obligated to inform Wewood without any delay if changes occur to any relevant company data, such as company name, registration number, contact details, shipping or payment addresses.

## PAYMENT

All orders, unless otherwise agreed upon in writing between the Reseller/Customer and Wewood in advance, are subject to prepayment prior to delivery. A deposit of 50% of the value shall be made in order to start production. Wewood reserves the right to require a 100% advance payment. All items are Wewood property until the total amount of the order is received.

The bank details and other relevant information for payment purposes will displayed at all times at the order confirmation/quote.

## PRODUCTION AND LEAD TIME

Wewood will start the production of the order when the agreed amount is effectively paid and confirmed. Although the standard production time for Wewood products is eight (8) weeks, each order confirmation will indicate its particular lead time. Orders with large amounts and/or bespoke pieces may be subject to specific lead times, that shall be negotiated between Wewood and the Reseller/Customer before the order is placed.

## **MATERIALS**

Wewood products offer a selected range of materials, that can be found on the following link: <https://materials.wewood.eu>

## **FABRICS**

A. While trying to keep the network of suppliers updated, Wewood can't be held responsible for any shortage of stock or delays from the fabric suppliers. If any of the situations occur, Wewood will inform the Reseller/Customer immediately and allow for the replacement of the fabric.

B. COM: when the Reseller/Customer decides to use COM (client own material) for the upholstered pieces on Wewood catalogue, a sample of 20x20cm shall be sent to Wewood address for review and approval. Wewood reserves the right to deny working with fabrics that are deemed not suitable for Wewood upholstery standards.

All fabrics beside our curated selection are considered COM.

A shipping tax is charged to each requested fabric, as we do not keep fabric stocks.

## **CANCELLATION AND RETURN OF GOODS**

No confirmed order by Wewood can be cancelled by the Reseller/Customer without a written approval from Wewood. If no written approval of order cancellation is issued by Wewood, the Reseller/Customer is accountable for the order and shall indemnify Wewood in full against all losses (such as order value, indirect costs, other charges and expenses incurred) as a result of any such cancellation, even if products are not yet delivered.

No product can be returned to Wewood without a written agreement with Wewood. Any product returned by the Reseller/Customer without prior confirmation from Wewood, and through no fault of Wewood's, will be subject to billing of all related losses (such as order value, indirect costs, damages, other charges and expenses incurred). Returned goods by postal claim to Wewood will not be collected or paid for by Wewood.

Product items made specifically for each client, defined and marked by Wewood as Made-to-order items, as well as any customized items, may not be cancelled or returned under any circumstance.

## SHIPPING TERMS & CONDITIONS

### PACKAGING

All orders are shipped in a triple wall card box tailor-made for each piece of furniture. Before packing, all the pieces are protected by polyethylene foam. If you wish a premium packaging for your order (Plywood Box), please contact our sales department before placing your order.

### SHIPPING COSTS

A. For some particular countries and from some minimum amount (1.500€), Wewood will offer to ship the goods without any additional costs. In the case of lower value, we might charge you with a handling fee of 120€.

B. For some other countries, Wewood will offer to ship the goods against payment for that service. The cost of that transport will be added to quote and must be paid accordingly by the Reseller/Customer.

C. If the above a) and b) don't apply to the order, the incoterms applied are EXWORKS. The items will be packed accordingly and shall be collected by the carrier of choice of the Reseller/Customer. When these terms apply, the goods are considered in possession of the Reseller/Customer when the pick-up of order is completed, and therefore Wewood holds no liability for any damages occurred from that moment on, either in transit or unloading at final destination.

D. Additional fees may incur if the Reseller or the Customer require additional documentation or services other than the standard Wewood Order Confirmation/quote, such as, but not limited to, custom packaging or labelling data, or other formats that are not standard to Wewood, or export documents, such as Country of Origin documentation.

E. The order confirmation/quote from Wewood specifies which delivery terms apply for each specific order.

### DELIVERY CONDITIONS FOR A) AND B)

The standard delivery (either complimentary or with costs for the Reseller/Customer) is made to ground floor only, and outside of the property.

The physical product must be inspected upon delivery by the Reseller/Customer.

For visible damages, defects, or incorrect type or quantity identified on arrival, the Reseller/Customer is responsible for obtaining a signed damage declaration / deviation report from the transporter for the claim to take effect. Such deviations must also be reported to Wewood no later than two (2) working days after delivery together with a copy of the signed transporter damage declaration.

Wewood is not responsible for any damage or defect caused by the Reseller or Customer after the item is delivered from Wewood, including damages or defects caused in storage, transportation, display, or handling.

For more information, please get in touch with our sales department.

## COMPLAINTS

Product errors must be reported immediately after they are identified by the Reseller or the Customer. Photos, damage description and product batch information must always be included in the claims reporting to Wewood. Local consumer laws regulating warranty and claims may apply.

Wewood undertakes to remedy all defects and deficiencies which are due to production by either repairing or exchanging the goods if such defects become apparent Within one year of the date of delivery to the Reseller/Customer.

Small knots, stripes, colour differences, marked and faint rings of wood grains are signs of genuineness and are not regarded as defects or deficiencies. Inappropriate use and the like are not covered by the right to complain.

Complaints must be made in writing and sent to the e-mail [info@wewood.eu](mailto:info@wewood.eu) and must include a detailed description of the defect/deficiency with accompanying photos. Wewood will assess each individual complaint and may request for this purpose that the product must be returned for assessment for the Reseller/Customer own account. if the complaint is justified, the defect or deficiency will be repaired or the product exchanged.

Failure to comply with these requirements means that the right to complain will be forfeited. The Reseller/Customer bears the risk for the goods being stored under normal storage conditions for furniture and for the condition of the goods during storage.

## GUARENTEE

A standard production guarantee of one (1) year applies to all products from Wewood, unless local laws, regulations, or specific agreements regarding particular orders stipulate otherwise.

Warranty conditions apply only to standard products that have not been reworked or modified by the user, the Customer, or the Reseller.

## RESTRICTIONS

None of the parties have the authority to act on the other party's behalf, nor to engage in any commitment toward any third party on the other's behalf.

Wewood has the right to change construction, materials, weight, and any other measurements of products without any prior notice, as long as this does not significantly change the product. The Wewood website is the point of reference for any correct updated and valid product specifications.

Any typographical, clerical or otherwise, error or omission in any official Wewood sales literature, quotation, Price List, acceptance of offer, invoice, or any other document or information issued by Wewood shall be subject to ongoing correction without any liability on the part of Wewood.

All images, renderings, and descriptions of products, including colours and materials presented by Wewood on any of its platforms are indicative. Variations in colours and material nuances naturally vary over time and in use.

## RIGHTS PROTECTION

Products from Wewood, including any drawings, specifications, product or material design elements, patents, trademarks, market related material and/or know-how are owned by Wewood, and shall remain Wewood's property, throughout and after termination of the business relationship between Wewood and the Reseller.

## **CONFIDENTIALITY**

The parties may not under any circumstance distribute or reveal matters of vital interest or any confidential information to a third party during or after the business relationship between Wewood and the Reseller.

## **DISPUTES**

This contract shall be governed by, and interpreted, in accordance with Portuguese law and the Portuguese courts shall have jurisdiction to resolve any disputes between Wewood and the Reseller/Customer.

Any legal disputes between the parties should be solved through direct negotiations. If direct negotiations do not solve the dispute, legal mediators, Portuguese law, and the Portuguese courts may be used.

## **CURRENCY AND EFFECTIVE DATE**

THIS PRICE LIST IS VALID FROM 20.04.2026 AND CANCELS ALL PRIOR PRICE LISTS.

ALL PRICES ARE IN EURO EXCL. VAT.

## **ADDITIONAL TERMS AND CONDITIONS FOR E-COMMERCE**

Unless otherwise expressly agreed in writing, all sales are subject to the following Terms and Conditions specific to online sales, in addition to the above General Terms and Conditions.

Notwithstanding any other provision of the contract, nothing in the contract confers or purports to confer any right to enforce any of its terms on any person or third party who is not a party to it.

### **OBLIGATIONS OF THE RESELLER**

The Reseller cannot promote or resell Wewood products on any other website than the official Reseller website approved by Wewood. Any website for the distribution of Wewood products must be approved by Wewood prior to launching. The Reseller cannot promote or resell Wewood products on any third-party online store such as eBay, Amazon, or the like.

Wewood expects the Reseller to sustain the same level of brand knowledge, product knowledge, technical knowledge, after service competencies, and to provide the same level of service towards the Customer, as one can expect from any physical Wewood retailer or distribution partner.

The functionality on the Reseller's website must be at a satisfactory level compared to the industry standard, or other relevant benchmarks. The domain name must correspond to the Resellers brand name so that the Customer can easily identify that the Reseller is the brand owner of the website.

The Reseller can maintain a subdomain branded as a specific Wewood subdomain or Wewood product domain of the Reseller's website if it is approved by Wewood in writing. Any product names of Wewood products are the property of Wewood alone. The Reseller cannot use these names in a way that it can look like they belong to the Reseller and the name should always be displayed together with and in conjunction to the Wewood brand name and brand logo. Examples of such names are: Scarpa, Bowie, Metis, etc.

The Reseller must continually update websites with the most recent Wewood logo and brand name, all relevant marketing material, product information, prices, product images and product names, reflecting the current product names, product description and technical specifications and an updated presentation of the overall product portfolio.

The Reseller can only display official brand and product images that are supplied by Wewood, unless otherwise has been agreed in writing. All materials not provided by Wewood should be approved by Wewood prior to publishing on the Resellers' website.

Without compromising the Resellers' right to set their own prices, Wewood expects that the Reseller follows the Recommended Retail Price List (RRPL) from Wewood at any time. Within the EU, the price difference between Resellers in the member-states should be caused only by the different local taxes.

The Reseller cannot present the discount on the product as the main online content. It can't also proceed with sales, promotions or any decrease on the RRPL without Wewood consent. The Reseller cannot present unjustifiable higher prices than the ones on the RRPL without proper reason and Wewood consent.

The quality and design of the Wewood brand and products shall be the main content in the online presentation and marketing of Wewood products. The Reseller is responsible to comply with any legal requirements, data protection laws, e-commerce laws, and any other current legal requirements protecting the Customer. The Reseller is responsible for protecting the Customers online payment in a way that complies with current online payment security standards.

RUA D. AFONSO HENRIQUES 77 GANDRA, APARTADO 10  
4589 – 907 REBORDOSA PORTUGAL  
T +351 224 114 050 | M +351 932 492 434

[WWW.WEWOOD.EU](http://WWW.WEWOOD.EU) | [INFO@WEWOOD.EU](mailto:INFO@WEWOOD.EU)

All market communication, including all claims handling or after sales communication with the Customer, shall be handled by the Reseller only and not by Wewood. Transportation of goods, including transport prices, choice of transport price models, delivery information, and information about delays towards the Customer is solely a matter between the Reseller and the Customer.









# WEWOOD

---

PORTUGUESE JOINERY

## DAILY INSPIRATION

-  [wewoodportuguesejoinery](#)
-  [wewoodportuguesejoinery](#)
-  [wewoodportuguesejoinery](#)
-  [company/wewoodportuguesejoinery](#)

[www.wewood.eu](http://www.wewood.eu)  
[info@wewood.eu](mailto:info@wewood.eu)  
[#wewoodportuguesejoinery](#)

Rua D. Afonso Henriques, 77  
4585 - 322 Gandra - Portugal

GPS N41°10'21.44" W8°26'20.07"

T. +351 224 114 050  
M. +351 932 492 434